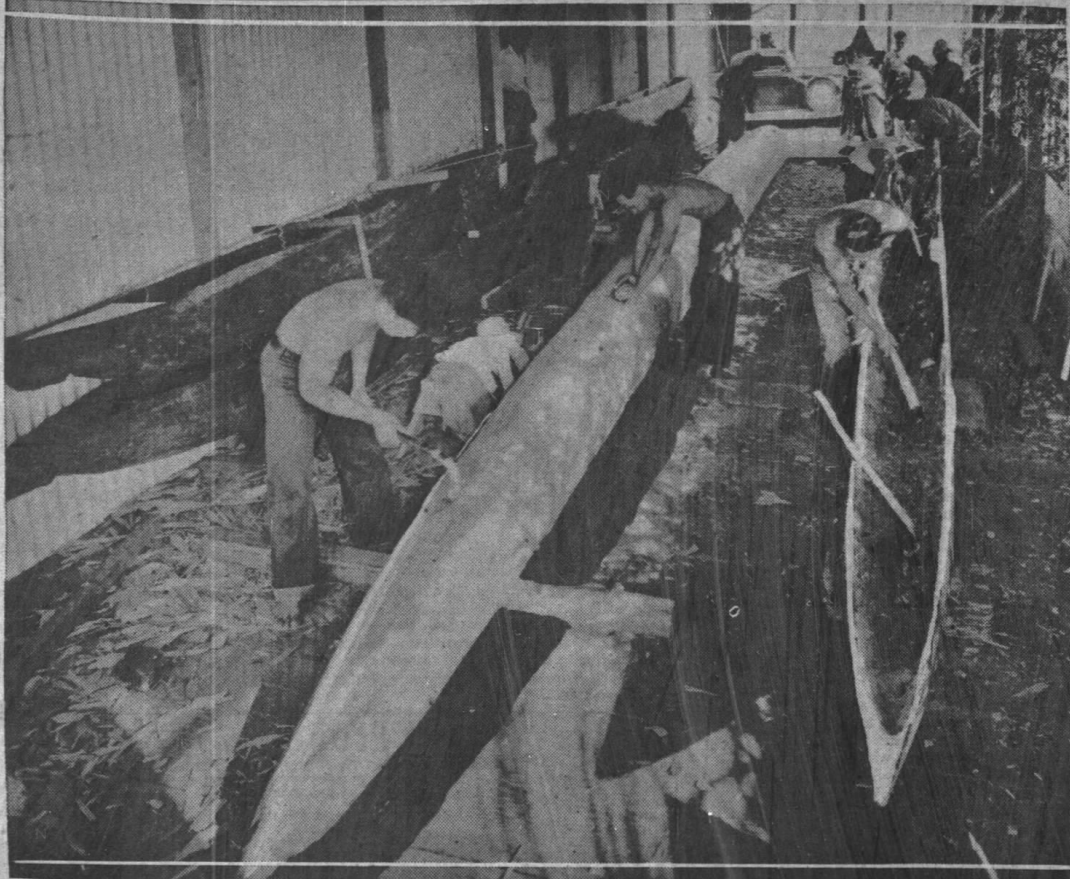


What Do You Suppose Kona Is Up To?



MYSTERY CANOES—The Koa outriggers over 40 feet in length with modern stream lines are rapidly taking shape at Kailua, Kona, island of Hawaii. This photo, taken by Pan-Pacific Press Bureau, gives a good idea of the length and shape of his traditional island type of craft which appears to have "gone modern."