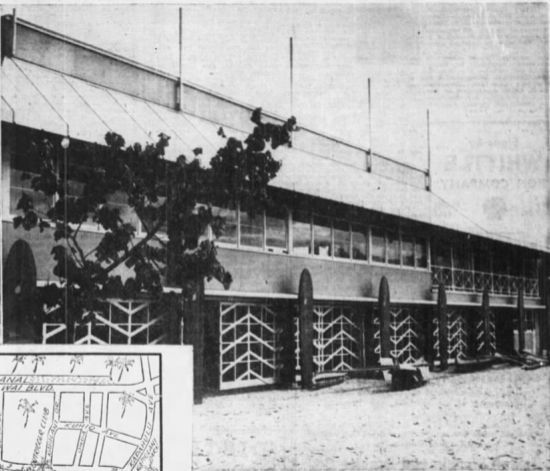
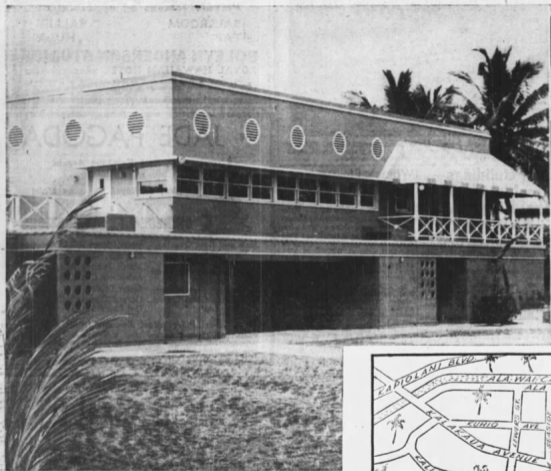


OUTRIGGER CANOE CLUB, IN NEW HOME, ADDS SOCIAL CENTER TO BIG DISTRICT



Today at noon the new Outrigger club buildings at Waikiki were informally opened and members and their friends began to inspect and use the premises.

With the informal opening today, one of Waikiki's famous spots is again a center of pleasant social and recreational activity. During construction period, most of its usual functions were suspended or limited.

The formal opening will be held in two or three weeks, when certain incomplete details are completed.

The new Outrigger club is in the center of a big and populous suburban section which is rapidly gaining urban characteristics. The map above shows its location relative to other east-south-side landmarks and districts.

The photographs herewith present two views of the new Outrigger club. In design and construction, the aim has been to afford utmost comfort and accommodations to members and to give a pleasantly informal atmosphere.

At the same time, as this is a beach club, it is designed to afford the maximum of wear-and-tear for hundreds of lusty youths and romping children.

The Outrigger club today is the expression of a friendly "family" spirit and it is the wish of its officers and directors that it shall always be looked on as a welcome spot for "all the family."